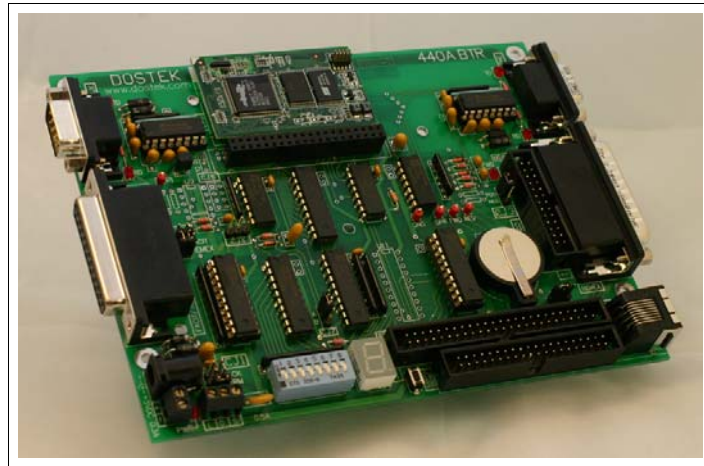


## 440A

**Maintenance-free punched-tape replacement for NC/CNC machine tools.**

- *eliminate punched tape*
- *load or run NC programs directly from computer*
- *reduce setup and programming time*
- *improve reliability*
- *integrate older NC machine tools with your DNC system*
- *optional direct Ethernet connection (10Base-T)*

**Behind-the-Tape Reader (BTR)**

Upgrading older NC/CNC machine tools for fast, reliable program loading from computer has never been easier than with the Model 440A Behind-the-Tape Reader (BTR) from Dostek.

**Simple, reliable operation.** With the 440A BTR, part programs are stored on computer disk and transferred electronically to the NC, reducing both setup and programming time. Punched tape is completely eliminated, along with the associated storage, handling and maintenance problems.

**Easy to install and use.** The 440A BTR is installed inside the NC cabinet and connected to the NC's tape reader port. Virtually any NC with a tape reader can be easily upgraded for direct program loading or execution.

**Free software.** A copy of the Dostek DNC™ BTR Edition file management, communication (DNC) and editing software is included. Features include real-time display of NC program execution on the computer screen.

**File storage.** A 256Kb battery-backed memory is included for file storage. Storage may be used to run the same program over and over again, or to continuously drip feed files of unlimited size.

**ISO/EIA/Binary.** Use the 440A BTR to load or run standard ISO or EIA part program files or binary files such as machine executive software and diagnostics.

**Bi-directional transfers.** Parallel (Facit) and serial (RS232/current loop) ports are also provided to allow sending data from the CNC's punch output port back to the computer.

**Troubleshooting features.** To simplify installation and troubleshooting, the 440A BTR displays status messages and lets you examine memory content, test inputs and outputs, and adjust options and parameters.

**Tape transcription.** A tape reader may be connected to the 440A BTR for transcribing existing punched tapes to computer files.

**Input/Output Ports**

DNC - Serial RS-232 port connects to the computer.

CNC - Separate connectors emulate Remex, EECO, Fanuc and Sanyo-Denki tape readers. Adapter cables are available for other reader models.

FACIT - Connect CNC parallel punch output or Remex tape reader output.

AUX - Serial RS-232 or current loop port for CNCs equipped with serial punch output.

**Status Indicators**

Six individual LED indicators plus a 7-segment status/message display.

**Power Source**

5 volts DC, 0.3A, regulated. Supplied by CNC or external power supply.

**Dimensions**

7.5" L x 5.0" W x 1.25" H